



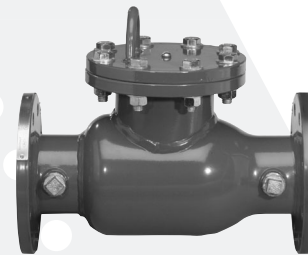
Series 1000DCV, 1005DCV, 1010DCV

Detector Check Valves

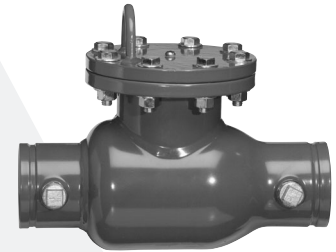
Sizes: 4" – 10" (100 – 250mm)

Features

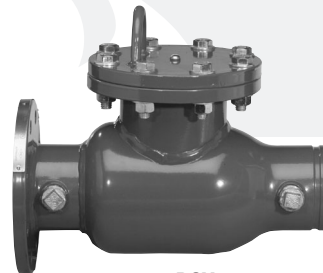
- Fabricated steel body provides a much lighter weight unit than cast steel or ductile iron
- Approved for mounting in horizontal or vertical positions
- Prevents backflow from fire prevention systems
- Used to isolate fire systems from public main during pumper boost of fire system
- Ames-Guard™ epoxy coating is rust resistant and impervious to most chemicals



1000DCV



1010DCV



1005DCV

Available Models

- 1000DCV – 4"-10" (100-250mm)
125# flanged end connections
- 1005DCV – 4"-6" (100-150mm)
125# flanged x grooved end connections
- 1010DCV – 4"-6" (100-150mm) grooved x grooved end connections

with bypass specify suffix:

- CFM – cubic feet per minute meter
- GPM – gallons per minute meter
- LM – without meter

Standard units are less bypass

Series 1000DCV Detector Check Valves detect any leakage or unauthorized use of water from fire or automatic sprinkler systems. The valve also isolates water from the public water mainline. During times of minimal water flow, the valve clapper remains closed so that the water flows through a bypass meter (optional). When fire flow is required, the water demand will open the clapper to allow full water flow.

Materials

- Body: fabricated steel
- Knuckle Joint Assembly: stainless steel linkage
- Seat: Bronze ASTM B63-82

Specifications

A Detector Check Valve shall be installed on fire protection or automatic sprinkler systems when connected to the potable water supply. The valve body shall be formed, welded units, in heavy steel. The valve shall be hydrostatically tested in excess of 700psi (48 bar). Valve construction shall eliminate any possibility of defects such as sand pits and blow holes which may occur in casting. All linkage parts shall be stainless steel. The removable clapper seat ring should be bronze. Each valve shall be individually tested before shipping. Valves shall be fusion bonded epoxy coated in accordance with AWWA C550. Valve shall be an Ames Fire & Waterworks Series 1000DCV.

Pressure – Temperature

- Maximum Working Pressure: 175psi (12.06 bar)
- Temperature Range: 33°F – 110°F (5°C – 43°C)

Job Name _____ Contractor _____

Job Location _____ Approval _____

Engineer _____ Contractor's P.O. No. _____

Approval _____ Representative _____

Ames product specifications in U.S. customary units and metric are approximate and are provided for reference only. For precise measurements, please contact Ames Technical Service. Ames reserves the right to change or modify product design, construction, specifications, or materials without prior notice and without incurring any obligation to make such changes and modifications on Ames products previously or subsequently sold.

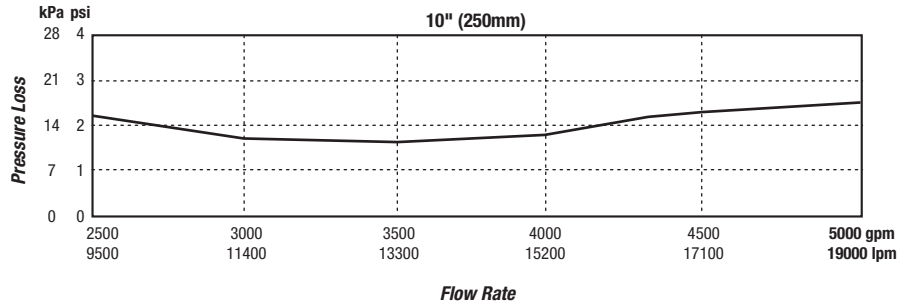
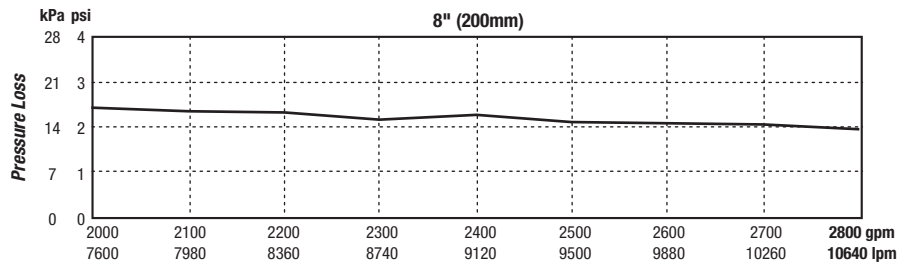
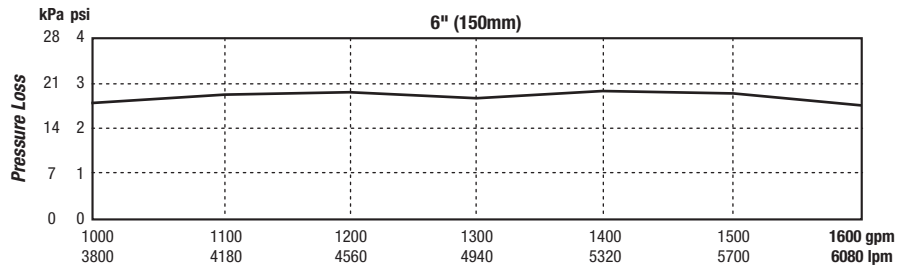
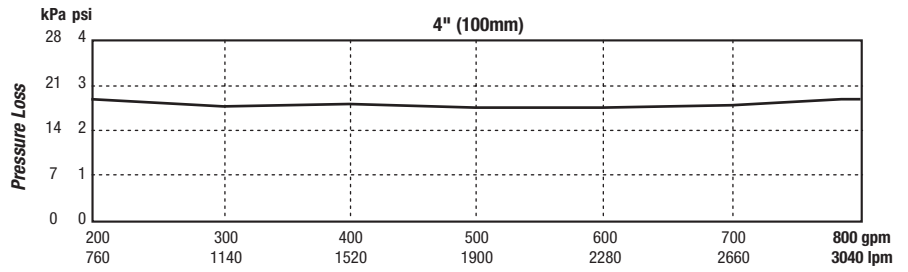
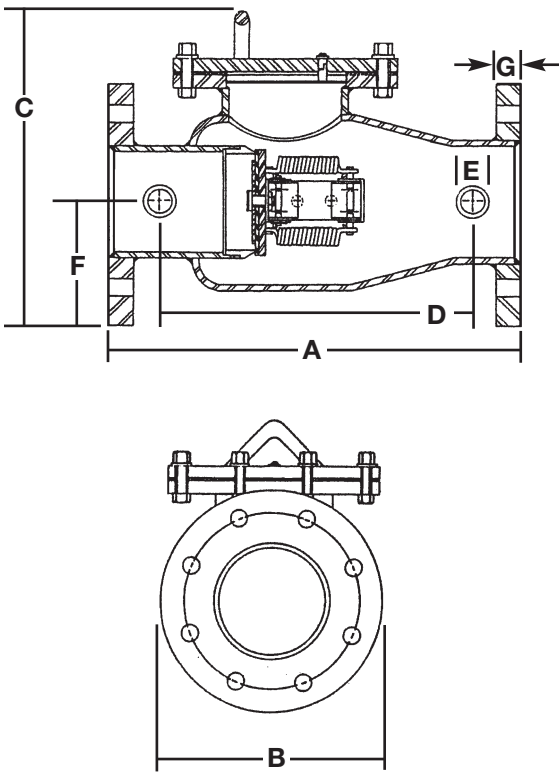
Approvals



Flange bolt pattern and hole diameter in accordance with ANSI B16.5 Class 125/AWWA C207 Class D

Body nameplate provides nominal size, direction of flow, PSI rating, year of manufacture and approval marks

Dimensions – Weights



IMPORTANT: Inquire with governing authorities for local installation requirements.

Size (DN) in. mm	A		B		C		D		E		F		G		Weight	
	in.	mm	in.	mm	in.	mm	in.	mm	in.	mm	in.	mm	in.	mm	lb.	kg
4 100	16½	419	9	229	12½	318	12⅞	308	1 NPT	25	4½	114	⅝	16	60	27
6 150	22½	559	11	279	15⅞	384	17	432	1½ NPT	38	5½	140	1¼	17	96	74
8 200	26½	665	13½	343	17¾	450	21	533	2 NPT	51	6¾	171	1½	17	154	70
10 250	36	914	16	406	21	533	28	711	2 NPT	51	8	203	1½	17	179	81

Consult factory for 1005DCV and 1010DCV dimensions.



A Division of Watts Regulator Company

www.amesfirewater.com



1427 North Market Blvd. • Suite #9 • Sacramento, CA 95834 • Phone: 916-928-0123 • Fax: 916-928-9333